

Name of memorial: Lynch Memorial

Inventory No. 1025

Place: Connaught Rangers Museum

Address and map reference: King House, Military Road, Boyle, Co. Roscommon.
Map reference: G 802 206 (Sheet 33).
Co-ordinates: N 53.9730°; W 8.3019°.

Access: during opening hours (see <http://www.kinghouse.ie/information-opening/>) **Parking:** adjacent streets and adjacent car park. **Disabled access:** no.

Position: on a wall within the Connaught Rangers Museum.

Description and dimensions: oval brass plaque. Height: 50cms. Width: 35cms.

Recorded by: Michael Pegum, 7 July, 2017.

Text: (Lynch coat of arms)

IN MEMORY OF
FRANCIS WILLIAM LYNCH
2ND LIEUTENANT CONNAUGHT RANGERS
WHO WAS BORN IN THE HOUSE NOW
FORMING PART OF THIS MONASTERY
ON 6TH OCTOBER 1895, AND WAS KILLED
IN ACTION NEAR YPRES IN FLANDERS
ON 26TH APRIL 1915.
REQUIESCAT IN PACE.

*“Greater love than this no man hath
that a man lay down his life
for his friends”*

St. John XV.13.

Mentioned in:

'Our Heroes' Dublin, Irish Life, 1916.

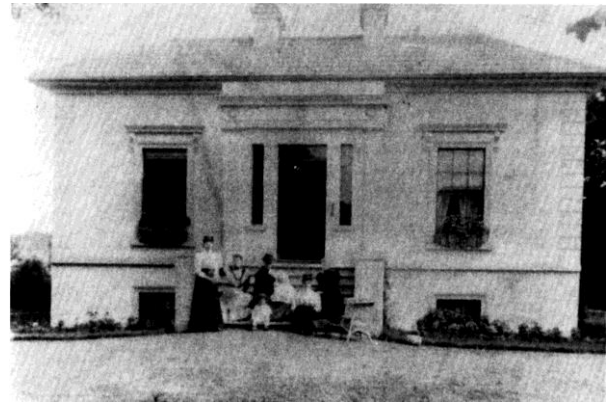
“Photographs with biographical notes of Officers of Irish Regiments and of Irish Officers of British Regiments who have fallen in action or who have been mentioned for good conduct, from August, 1914 to July, 1916.”

Also includes photos and biographical details of some other ranks (not officers) who died or were decorated. Reprint available from www.naval-military-press.com.

“The Ranger”; the Journal of the Connaught Rangers Association (in press).

2nd Lt. Francis William Lynch, 4th (att. 1st) Battalion, Connaught Rangers

Francis William Lynch was born in St. Mary's Lodge, Simmonscourt Road in Ballsbridge, Dublin, on 6th October, 1895. This house was rented from the McCann family, and one of them, Sister Mary Magdalen McCann, later became Mistress of Novices with the Order of Poor Clare nuns in Carlow. Her father gave St. Mary's Lodge to the Order and, in 1906, the nuns moved in, naming it St. Damian's Monastery, where the Order still resides.

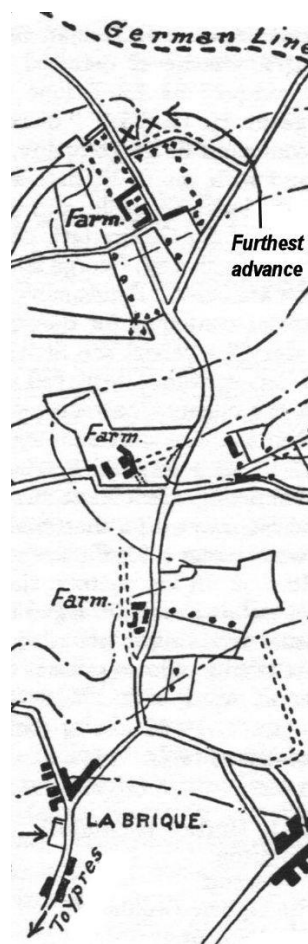


St. Mary's Lodge, Simmonscourt Rd.,
Ballsbridge, Dublin



Francis William Lynch was the third of five sons of Henry Charles Lynch, a barrister in the Land Commission, and Alice Mary Lynch, née Vaughan. He was educated at Belvedere College in Dublin and the Oratory School in Birmingham, and entered Trinity College, Dublin as a student in 1913. When war broke out, he was commissioned in the 4th Battalion, the Connaught Rangers (a training battalion); he was transferred to the 1st Battalion in March, 1915, joining them near Ypres.

The Second Battle of Ypres began on 25th May, 1915. On 26th April, the 1st Connaught Rangers were sent to the north of the town, to attack the Pilckem Ridge. A gas attack by the Germans broke up the advance of flanking units, and the Rangers were pinned down, north of La Brique, by machine-gun fire. Francis William Lynch was killed in this attack, at the point marked: 'XX Furthest advance' on the map. He was buried at the place marked with an arrow in La Brique, a mile north of the Menin Gate in Ypres.



This memorial was donated to the Connaught Rangers Association by Dr. Michael Pegum, whose grandfather, Captain George Seymour Russell Stritch, 6th Battalion, Connaught Rangers, was killed in action in France on 6th February, 1916.